

Development of pro-biodiversity business

Zenon Tederko
Polish Society for the Protection of Birds

Tallinn, 27-29 May 2010

www.smeforbiodiversity.eu

Project Funded by EC DG Environment



Project implemented by Partners:

RSPB, MME, OTOP, BSPB
together with ECNC



Project Steering Committee:
EC, EBRD and EIB



www.smeforbiodiversity.eu

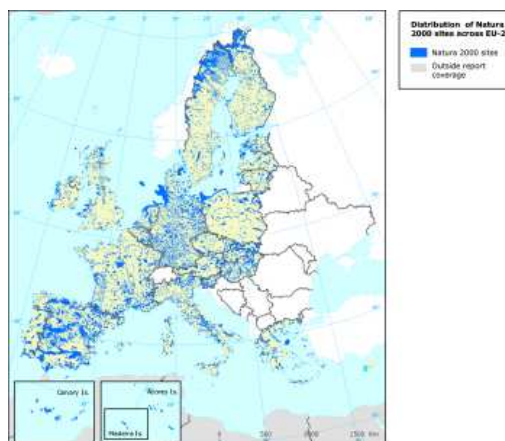
Questions ???????

- Where is the biodiversity?
- What biodiversity we are concerned with?
- How we want to protect it?..
- How and where sustainable development takes place?

3

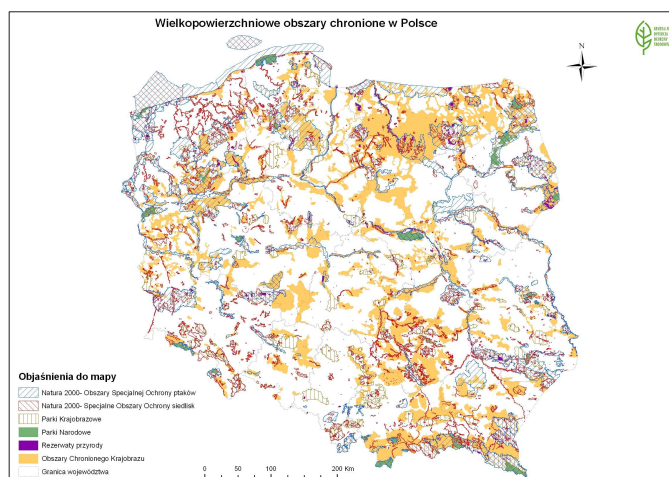
Natura 2000 network – European challenge

- Up to 25% of EU
- 1 000 000 km²
- Over 25,000 sites



4

Protected areas in Poland (1)



5

Protected areas in Poland (2)

Protection regime	km2	% of country
23 National Parks	3 285,24	1,05
1439 Nature Reserves	1 724,85	0,55
120 Landscape Parks	25 937,58	8,32
381 Areas of Protected Landscape	85 124,54	27,29
958 Natura 2000 areas (823 ACIs + 141 SPAs) (11,0% + 15.6 %)		19.7

**Majority of biodiversity is the subject to economic use
!!!???**

6

Where sustainable development comes true?

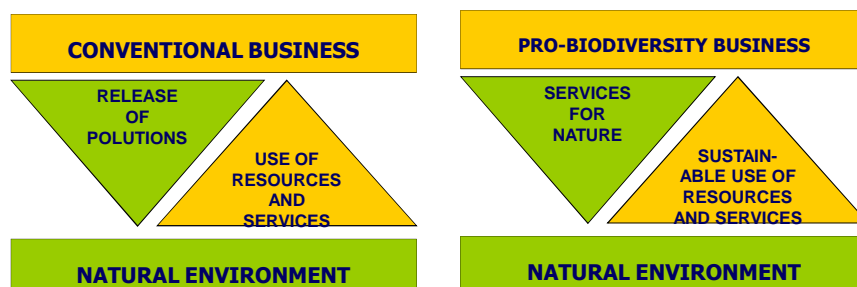
- Is Sustainable Development an abstract category ????
- If „Development“, then it means economic processes !!!

**SD takes place at lowest level – farm, enterprise,
household, individuals !!!!**

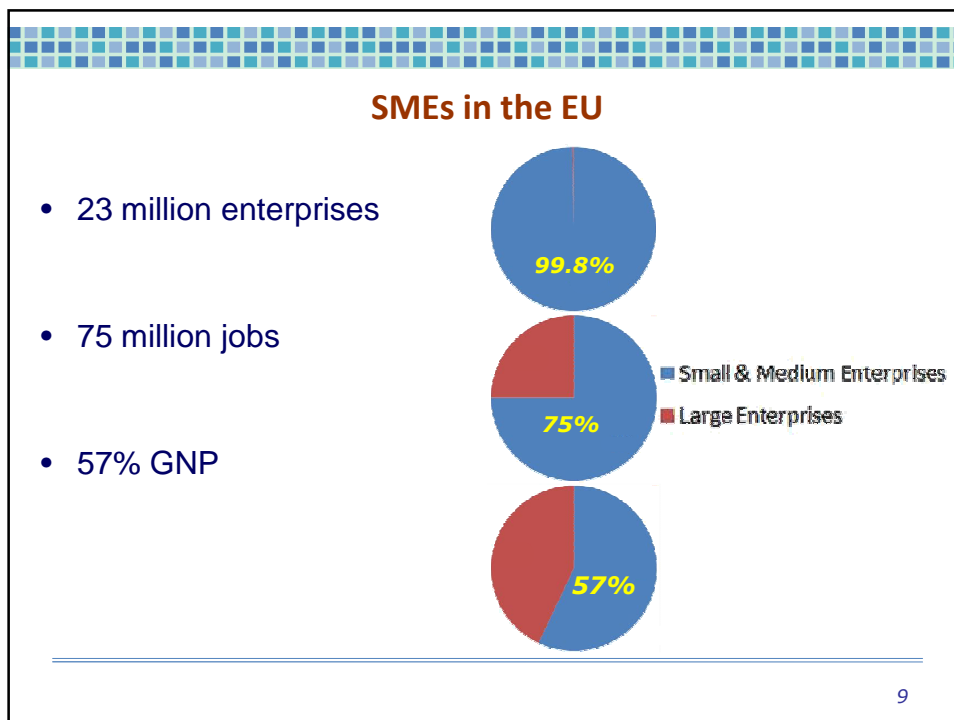
- Sustainability level of development results from myriad of individual decisions !!!
- If so, what are the key tools & instrument to influence such numerous decisions?

7

Relation between economy & nature



8

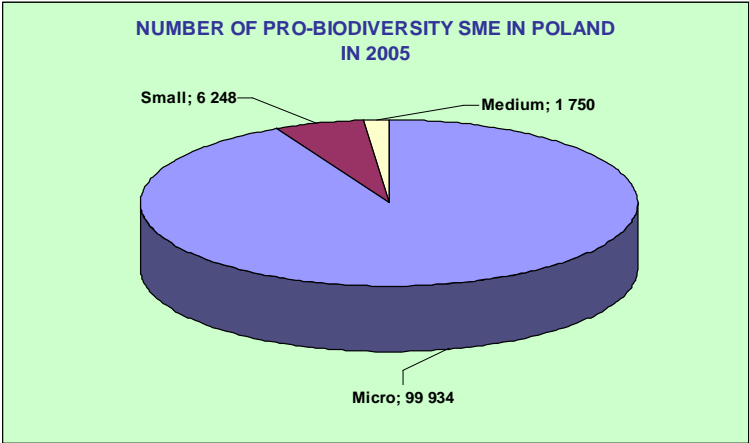


Public – private partnership a key to ...

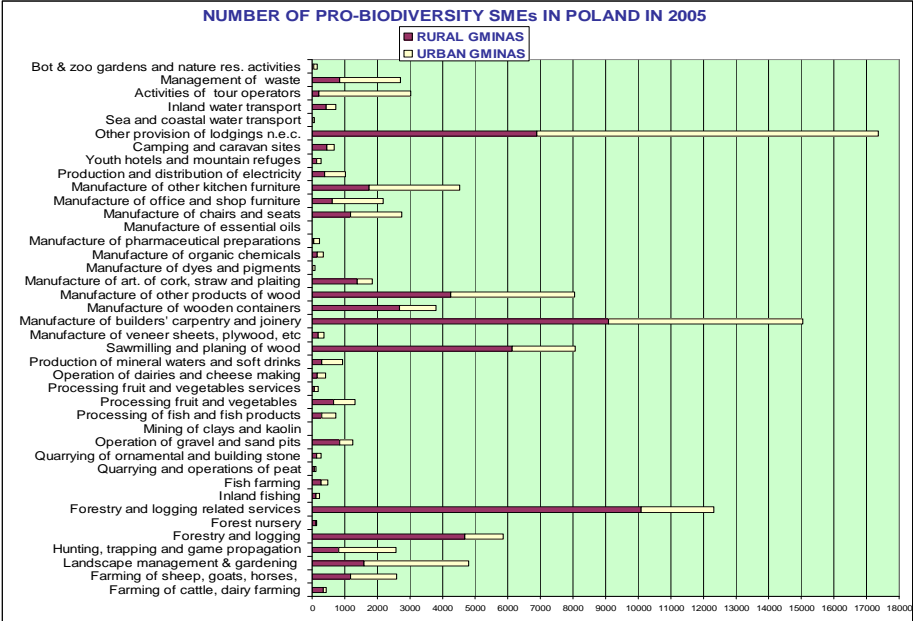
- Is the partnership a choice or a must?
- CBD CoP VIII & IX Decisions – XVII and XXV
- N 2000 maintenance costs > annually 6 bill. €
- Partnership - but with whom, who is the partner?

10

Pro-biodiversity SMEs in Poland



11



Barriers to investments in biodiversity (1)

- The lack of practical know-how within both the SMEs and the financial institution sector with regard to the potential of enterprise development in N2000 sites and the natural conditions affecting investment projects
- The banking sector's disregard of the market niches of SMEs that depend on natural resources and are located in high natural value areas
- The high risk to investments caused by a lack of management plans for N2000 sites and a lack of protection plans for other areas

13

Barriers to investments in biodiversity (2)

- A lack of professional advisory services or tools for the identification and assessment of commercial investment projects in N2000 sites, which could ensure positive economic as well as nature outcomes
- A lack of access to funding sources and suitable financial instruments as well as a lack of procedures that are friendly to SMEs

14

What pro-biodiversity SMEs need to develop?

- Enabling environment by EU and national governments – „better regulations”, administrative structures, „one window”
- Provision of technical support (know how) to develop viable pro-biodiversity investment project
- Innovative and well targeted finance facilities enabling realization of growing PBBs market
- Environmental information meeting demands of EIA, SEA, LUP, BAP, HD and others – EMAS, ISO, ect.

15

Nature conservation beyond 2010

- **Integration of biodiversity into sectoral policies and practices** remains still much valid
.....but
- **Educating, motivating and empowering local decision makers and environment users** at lowest level is equally important
- In steadily deepening European democracy **community based management** is more important than ever before
- **Public-private partnership** is a key word for „beyond 2010”
- Supporting **development of pro-biodiversity business** is the tool to protect biodiversity beyond Protected Areas

16

